

NEW!

OA Knee Wrap

A Dual Approach to Knee OA

The OA Knee Wrap takes a dual approach to managing symptoms of Osteoarthritis with its two point hinge adjustment for even pressure distribution and its comfortable wrap design that delivers all-around compression to help decrease symptoms of pain and inflammation.

CODE L1843/L1851 APPROVED



Dual Hinge

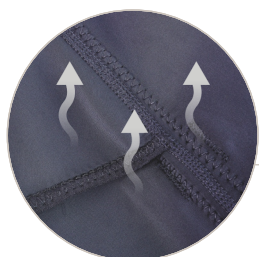
The dual hinge ensures even pressure distribution and allows for flexion/extension stops.





Two Point Hinge Adjustment

Dual hinge adjustment for even pressure distribution and comfort.



Breathable Material

Provides compression to reduce swelling and discomfort associated with Osteoarthritis.



Numbered Hook and Loop Tabs

Outline the proper application sequence to make it easy for patients to don and doff.



Range of Motion

Adjustable stops allow you to set the range of motion for appropriate treatment during continuum of care.

SIZE	THIGH: 6 in (15 cm) ABOVE MID PATELLA	CALF: 6 in (15 cm) BELOW MID PATELLA
S	15.5-18.5 in (39-47 cm)	12-14 in (30.5-35.5 cm)
M	18.5-21 in (47-53.25 cm)	14-16 in (35.5-40.5 cm)
L	21-23.5 in (53.25-59.5 cm)	16-18 in (40.5-47 cm)
XL	23.5-26.5 in (59.5-67.25 cm)	18-20 in (47-50.75 cm)
XXL	26.5-29.5 in (67.25-75 cm)	20-22 in (50.75-56 cm)

OA Knee Wrap, S (Left)	651021	OA Knee Wrap, S (Right)	651026
OA Knee Wrap, M (Left)	651022	OA Knee Wrap, M (Right)	651027
OA Knee Wrap, L (Left)	651023	OA Knee Wrap, L (Right)	651028
OA Knee Wrap, XL (Left)	651024	OA Knee Wrap, XL (Right)	651029
OA Knee Wrap, XXL (Left)	651025	OA Knee Wrap, XXL (Right)	651030

ACCESSORIES

Extension/Flexion Stop Frame	651128	Varus/Valgus Adjustment Key	651129
Aspen Knee Suspension Wrap - Code L2397 Approved		651111	

